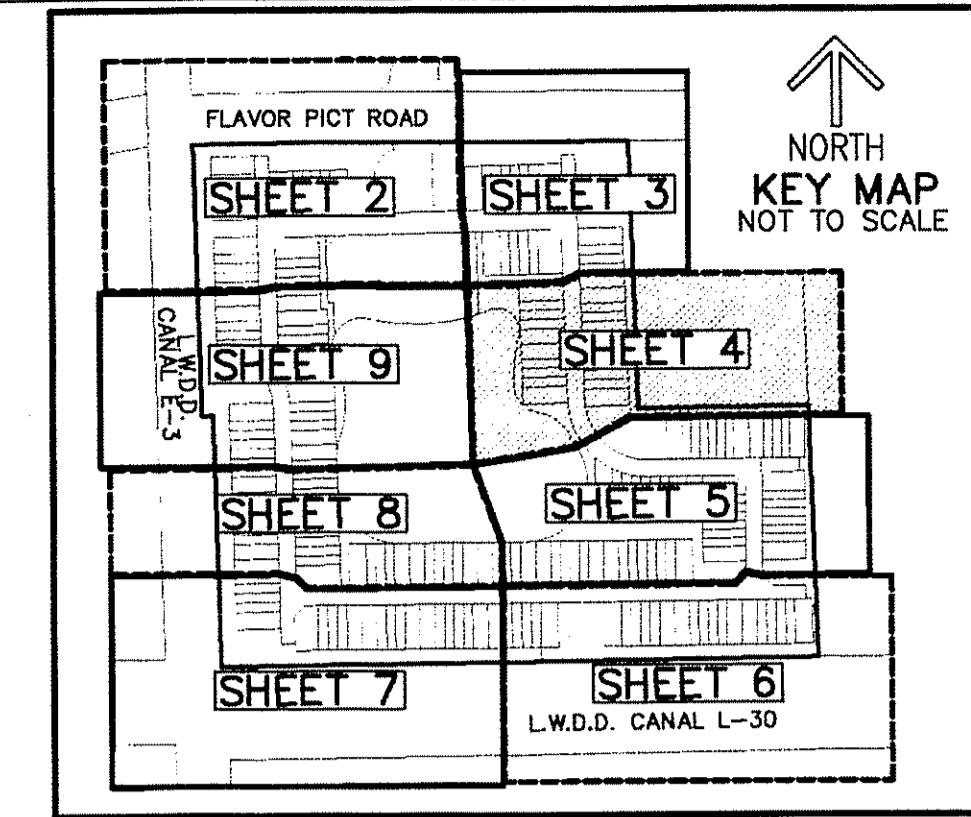


FLAVOR PICT TOWNHOMES PUD

BEING A PORTION OF THE SOUTHEAST ONE-QUARTER OF SECTION 2,
TOWNSHIP 46 SOUTH, RANGE 42 EAST,
PALM BEACH COUNTY, FLORIDA.

THIS INSTRUMENT PREPARED BY
DAVID P. LINDLEY
OF
CAULFIELD and WHEELER, INC.
SURVEYORS - ENGINEERS - PLANNERS
7900 GLADES ROAD, SUITE 100
BOCA RATON, FLORIDA 33434 - (561)392-1991
CERTIFICATE OF AUTHORIZATION NO. LB 3591



196

STATE OF FLORIDA
COUNTY OF PALM BEACH
THIS PLAT WAS FILED FOR
RECORD AT _____ M.
THIS _____ DAY OF _____
A.D. 20____ AND DULY RECORDED
IN PLAT BOOK _____ ON
PAGES _____ AND _____

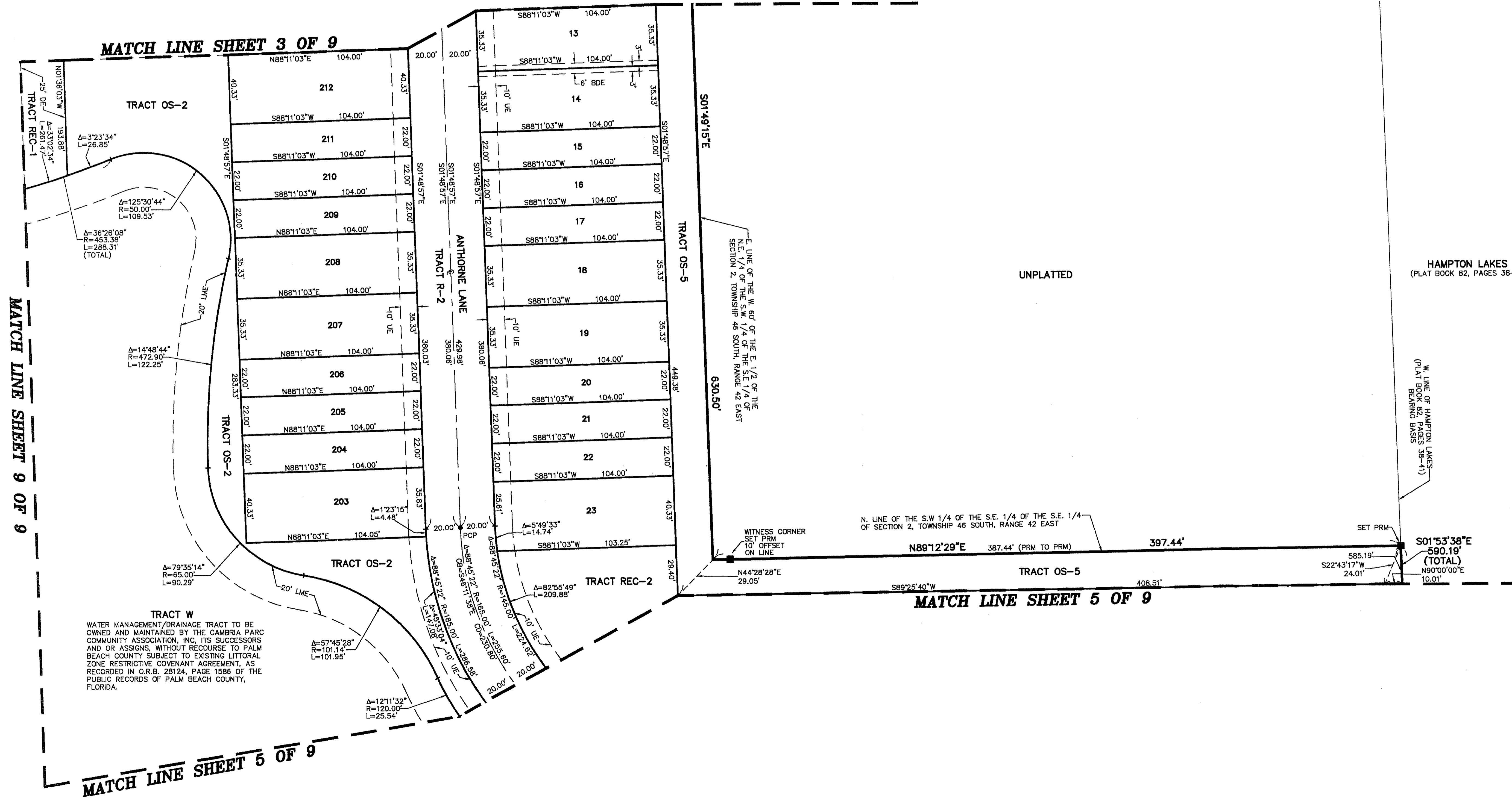
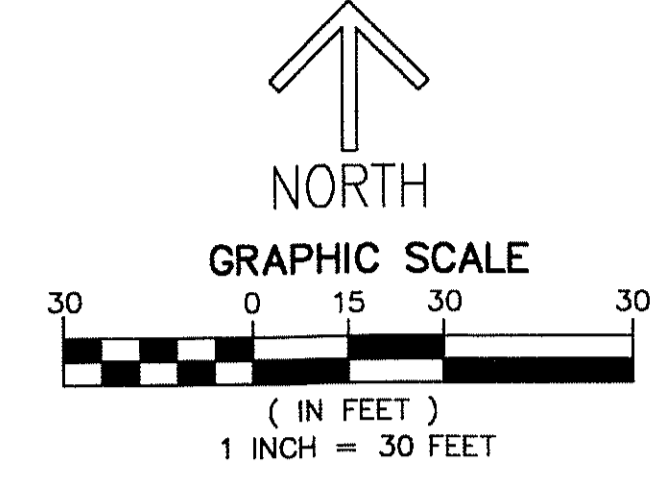
SHARON R. BOCK
CLERK AND COMPTROLLER
BY: _____
DEPUTY CLERK

SHEET 4 OF 9

- LEGEND/ABBREVIATIONS**
- CL - CENTERLINE
 - Δ - DELTA (CENTRAL ANGLE)
 - BDE - BUFFER DRAINAGE EASEMENT
 - CB - CHORD BEARING
 - CD - CHORD DISTANCE
 - DE - DRAINAGE EASEMENT
 - E - EASTING
 - FPL - FLORIDA POWER & LIGHT CO.
 - L - ARC LENGTH
 - LAE - LIMITED ACCESS EASEMENT
 - LB - LICENSED BUSINESS
 - LMAE - LAKE MAINTENANCE ACCESS EASEMENT
 - LME - LAKE MAINTENANCE EASEMENT
 - LSE - LIFT STATION EASEMENT
 - L.W.D.D. - LAKE WORTH DRAINAGE DISTRICT
 - N - NORTHING
 - O.R.B. - OFFICIAL RECORD BOOK
 - BBUE - CITY OF BOYNTON BEACH UTILITY EASEMENT
 - R - RADIUS
 - UE - UTILITY EASEMENT
 - PRM - DENOTES PERMANENT REFERENCE MONUMENT
4" x 4" x 24" CONCRETE MONUMENT WITH
ALUMINUM DISK STAMPED "C&W PRM LB3591"
 - PCP - DENOTES PERMANENT CONTROL POINT

NOTES
COORDINATES, BEARINGS AND DISTANCES

COORDINATES SHOWN ARE GRID
DATUM = NAD 83 1990 ADJUSTMENT
ZONE = FLORIDA EAST
LINEAR UNIT = US SURVEY FEET
COORDINATE SYSTEM 1983 STATE PLANE
TRANSVERSE MERCATOR PROJECTION
ALL DISTANCES ARE GROUND
SCALE FACTOR = 1.0000339
GROUND DISTANCE X SCALE FACTOR = GRID DISTANCE
BEARINGS AS SHOWN HEREON ARE GRID DATUM,
NAD 83 1990 ADJUSTMENT, FLORIDA EAST ZONE.



TRACT W
WATER MANAGEMENT/DRAINAGE TRACT TO BE OWNED AND MAINTAINED BY THE CAMBRIA PARC COMMUNITY ASSOCIATION, INC, ITS SUCCESSORS AND OR ASSIGNS, WITHOUT RECOURSE TO PALM BEACH COUNTY SUBJECT TO EXISTING LITTORAL ZONE RESTRICTIVE COVENANT AGREEMENT, AS RECORDED IN O.R.B. 28124, PAGE 1586 OF THE PUBLIC RECORDS OF PALM BEACH COUNTY, FLORIDA.

HAMPTON LAKES
(PLAT BOOK 82, PAGES 38-41)

UNPLATTED

MATCH LINE SHEET 3 OF 9

MATCH LINE SHEET 9 OF 9

MATCH LINE SHEET 5 OF 9

MATCH LINE SHEET 5 OF 9